

asento

by Halo
floors

Asento

LUXURY VINYL TILE



Asento

LUXURY VINYL TILE

Excellence in Value

Once again, Halo Floors takes luxury vinyl tile to a new dimension. The Asento collection of tiles and planks has achieved the coveted balance between form and function. Inspired by the need for moderately priced durable flooring, Asento is a perfect solution for military and multi-family housing, school dormitories and other high traffic areas.

When the need for affordable, dependable flooring arises, choose Asento, the wise choice for low maintenance classic floors.



Design Solutions Inspired by Nature

The carefully selected Asento stone and wood patterns create a timeless collection of planks and tiles inspired by nature. Whether you prefer the rustic look of a 7" plank like Weathered Pine or the classic appeal of a 4" Select Oak the rich beauty of natural woods come together in this attractive offering.

The subtle tone-on-tone shades of Mother Nature are captured with Asento tiles. Mesa, Mocha, Bronze and other enduring patterns offer the luxurious appearance of time-honored stones and pavers with the practical features of luxury vinyl tile.



5524 Bronze

12" x 18" Stone Tiles



5535 Natural Mesa



5536 Natural Mocha



5537 Natural Grey



5538 Natural Graphite

18" x 18" Stone Tiles



5525 Mesa



5526 Mocha



5527 Grey



5528 Graphite



5522 Washed Concrete



5524 Bronze

4" Planks

Beautiful, Practical, Affordable

When you asked for classic wood and stone patterns, we listened. Then you asked for ease of maintenance. Again, we listened. And, finally, you asked for affordability. We listened.

Asento by Halo Floors has been created for commercial applications such as multi-family and military housing, university dormitories and anywhere that low maintenance and highly durable moderately priced flooring is desired. It is backed by Halo floors, a well-respected flooring brand with a history of outstanding performance in the most demanding of environments such as healthcare and retail.

We don't just want to create floors that mimic nature. Our value is in creating timeless, beautiful products that are both practical and affordable.

Timeless Design

Asento by Halo offers a street-smart collection of timeless design solutions for busy spaces.

Asento Features

- ◆ 22 colorways in traditional and classic wood species and stone patterns
- ◆ PU wearlayer for durability and low maintenance options
- ◆ ISO 9001 and 14001 certified
- ◆ 10 year commercial warranty
- ◆ CA 01350 Certified



5503

Select Oak



5541

Classic Oak



5504

Cherry



5508

Chestnut



5506

Mahogany



5507

Ebony

7" Planks



5572

Heart Pine



5573

Log Cabin



5574

Weathered Pine



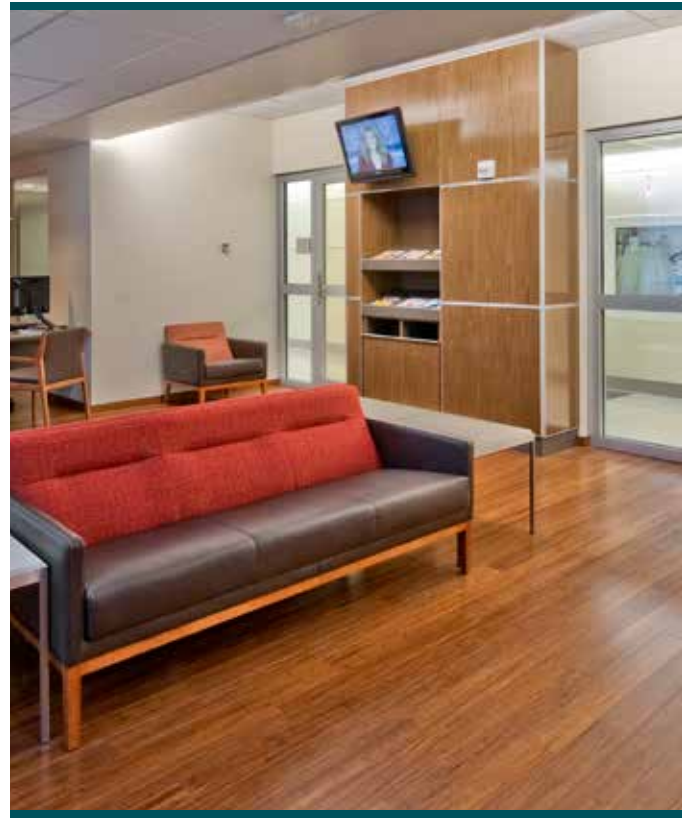
5576

Smoked Barnwood



5570

Old Barn



5575 Charred Barnwood

Recommended Product Applications

The following Halo application chart is provided to aid in understanding where Halo Asento is recommended for use. This application chart is a subjective recommendation and is predicated upon the adherence to proper installation techniques; specific location of installation; level of foot traffic; and the type and professional level of maintenance practiced on-site.

	Asento	Woods	Stones & More		Asento	Woods	Stones & More		Asento	Woods	Stones & More
Healthcare				Education				Hospitality			
Cafeterias	●	★	★	Auditorium		●	●	Conference Rooms	●	★	★
Corridors	●	★	★	Cafeterias	●	★	★	Corridors	●	★	★
Dialysis		●	●	Classrooms	●	★	★	Dance Floor		●	●
Elevators		●	●	Computer Rooms	●	●	●	Dining Areas	●	★	★
Emergency Department		●	●	Corridors	●	★	★	Elevators		●	●
Exam/Prep Room		●	●	Dormitories	●	★	★	Exercise Rooms			
Hydrotherapy Room		●	●	Entryways	●	★	★	Guest Bathrooms		●	●
Intensive Care		●	●	Food Service Area		●	●	Guest Rooms		★	★
Laboratories		●	●	Gymnasium				Lobbies	●	★	★
Lobbies	●	★	★	Laboratories		●	●	Lounges	●	★	★
Neonatal Intensive Care		●	●	Lavatories				Stairways/Landings			
Nurses Station	●	★	★	Libraries	●	★	★	Vending Areas	●	●	●
Offices	●	★	★	Locker Rooms				Office			
Operating Room				Multipurpose		●	●	Computer Rooms			
Patient Room	●	★	★	Offices	●	★	★	Conference Rooms	●	★	★
Pharmacy		★	★	Ramps (indoor)				Corridors	●	★	★
Physical Therapy Room		●	●	Ramps (outdoor)				Dining Areas	●	★	★
Ramps (indoor/outdoor)				Showers				Elevators		●	●
Stairways/Landings (indoor/outdoor)				Stairways/Landings				Lavatories		●	●
Staff Lounge	●	★	★	Teachers Lounge	●	★	★	Lobbies	●	★	★
Storage/Utility Room	●	●	●	Utility/Storage Area	●	●	●	Offices	●	★	★
Waiting Room	●	★	★	Institutional				Stairways/Landings			
Retail				Churches	●	★	★	Storage Rooms	●	●	●
Drug Store	●	★	★	Courthouses	●	★	★				
Indoor Mall Common Areas	●	●	●	Funeral Houses	●	★	★				
Sales Floor – Dept Store	●	★	★	Libraries	●	★	★				
Sales Floor – Mass Merchandiser		●	●	Museums	●	★	★				
Specialty Shops	●	★	★	Prisons	●	●	●				

★ Highly Recommended
● Recommended

USGBC-LEED® Credits

(✓) Based on the 2009 LEED rating system and the overall scope of your project, product may contribute to your LEED scorecard.

Product	Materials & Resources					Indoor Environmental Quality			
	MR Credit 1.2: Building Reuse	MR Credit 2: Construction Waste Management	MR Credit 3.1: Materials Reuse	Recycled Content Pre-Consumer	Recycled Content Post-Consumer	MR Credit 4: Recycled Content Contribution (Sum of post-consumer + 1/2 pre-consumer)	IEQ Credit 4.1: Low Emitting Materials - Adhesives	IEQ Credit 4.3: Low Emitting Materials - Flooring Systems	California Section 01350 Compliant
Asento	✓	✓	✓	15%	50%	58%	✓	✓	✓

Product Characteristics

Standard Spec	ASTM F 1700
Classification	Class III Type A & B
Overall Thickness	2.5 mm (0.10")
Wear Layer Thickness	0.5 mm (0.020")
WOOD	
Nominal Dimensions / Packaging	4" x 36" (102 mm x 914 mm) 36 pc/ctn (36 sf/ctn)
	7" x 48" (178 mm x 1220 mm) 18 pc/ctn (42 sf/ctn)
STONE	
Nominal Dimensions / Packaging	18" x 18" (457 mm x 457 mm) 16 pc/ctn (36 sf/ctn)
	12" x 24" (305 mm x 610 mm) 21 pc/ctn (42 sf/ctn)

Fire

ASTM E 648 Critical Radiant Flux	Class 1 Passes
ASTM E 662 Smoke Generation	< 450

Test Performance

ASTM F 1700 Standard Specification for Solid Vinyl Floor Tile	Meets or Exceeds Requirements
ASTM C 1028 Static Coefficient of Friction	≥ 0.6 ADA Compliant
ASTM F 970 Static Load Limit	500 PSI
ASTM F 925 Chemical Resistance	Passes
ASTM F 137 Flexibility	Passes
ASTM F 1514 Resistance to Heat	Passes
ASTM F 1515 Resistance to Light	Passes
CA 01350 VOC Emissions	Passes

Warranty

Halo Asento is covered by a limited 10-year warranty. Visit our web site, www.cbcflooring.com for complete details.

asento

by Halo
floors

Asento
LUXURY VINYL TILE

Halo Floors
919-230-8700 • www.cbcflooring.com

CBC Flooring



1118

 Certified paper, contains post-consumer fiber.
 Acid-free recycled material. Printed with organic-based inks.