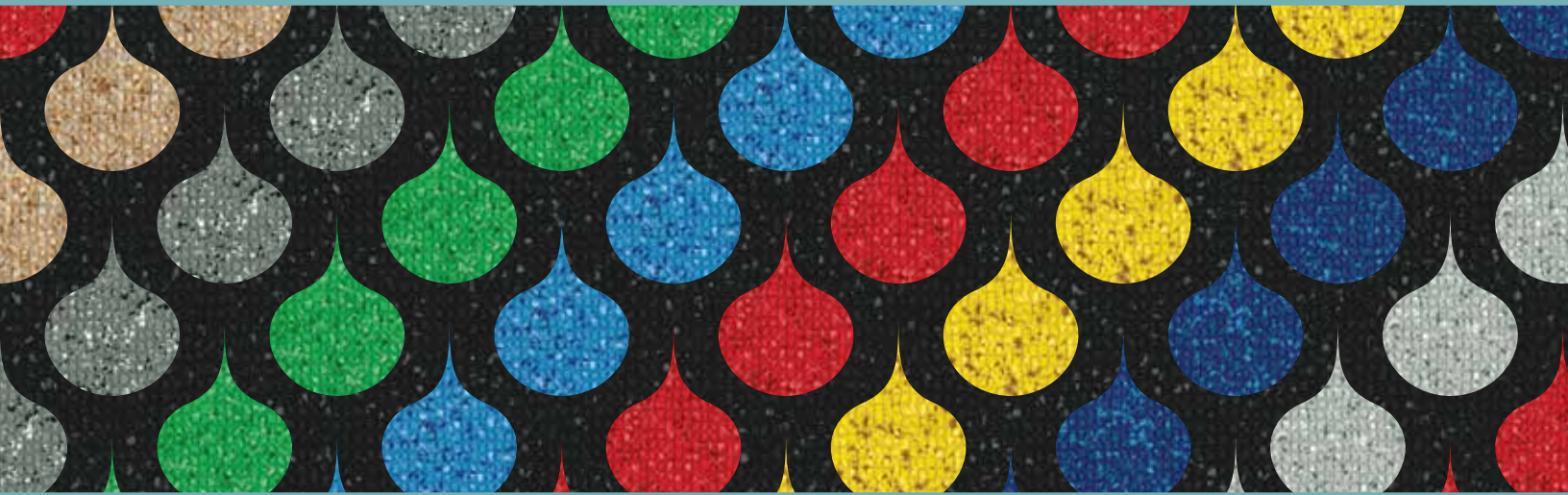




MT Sheet

SLIP RESISTANT FLOORING



MT Sheet

SLIP RESISTANT FLOORING

A Unique Slip Resistant Flooring Solution

Do you have an area where topical water is present and you need extra slip resistance? Are you looking for a product that has an exciting visual? Or how about a product that reduces impact velocity from falls when compared to bare concrete or stone tile? You can have all of these benefits and more with MT Sheet.

MT combines an attractive and colorful appearance with the practicality of a slip resistant floor. Engineered specifically for use around indoor and outdoor pools, water parks, and other wet areas with barefoot and soft-soled foot traffic, MT Sheet adds a dramatic “splash” to your installation!



Discover the Difference

MT Sheet is a truly unique product intended for use in very specific environments. Engineered for use around both indoor and outdoor pools, this attractive sheet adds an inviting look to your floor.

Product Features

- Indoor/outdoor sheet flooring
- Wet or dry slip resistance
- Easy maintenance
- Available in 10 colorways
- Can be heat welded
- Barefoot or soft-soled foot traffic*
- Non-abrasive surface - comfortable under bare feet
- Reduced impact velocity from falls when compared to bare concrete or stone tile

**Note: This product is specifically engineered for installations where barefoot or soft-soled shoes (such as flip flops and water sport slipper/shoes) are most often found. It is not recommended for use where standard hard-soled shoes are worn.*



More than just a pretty floor

MT sheet has been engineered to be more than just a pretty floor. Red, yellow, bright blue, green and all the other colors in this collection will retain their clarity and resist fading when exposed to UV light. With proven fade resistance indoors or out you can feel confident when specifying any of our vibrant colors.

MT Sheet is available in 6' x 66' rolls with a thickness of 0.11" (2.9mm). It can also be heat welded with our coordinating welding rods for a virtually "seamless" installation.

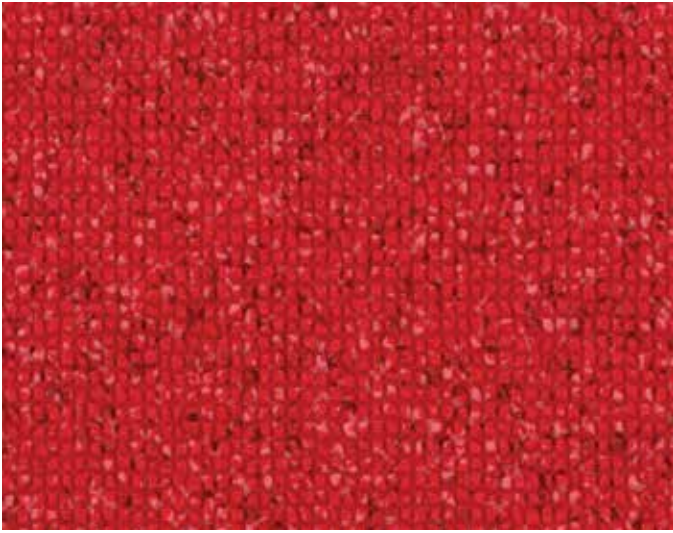
Texture and Color Designed to Inspire

Takiron MT sheet has been engineered to bring fresh new features to practical slip resistant flooring needs. This collection of saturated colors and rich texture takes design inspiration to a new level. Whether you choose to use it indoors or outdoors, our colors have been selected to mix and match as field or accents giving you a myriad of creative possibilities.

Ease of maintenance and a comfortable walk under foot are added benefits.

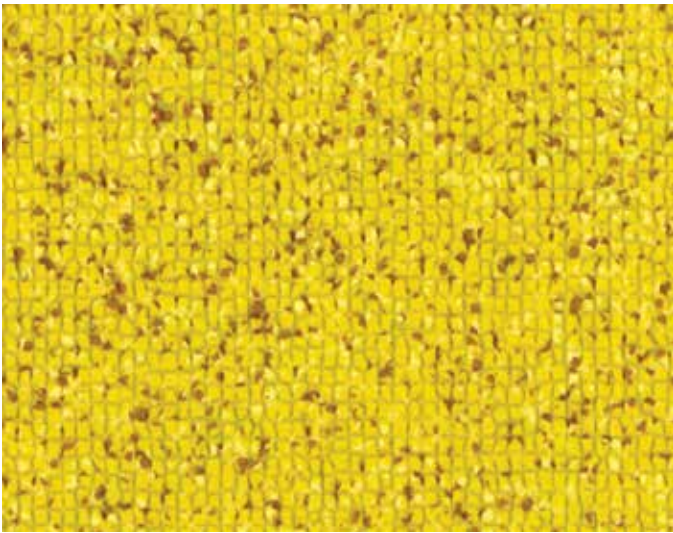
Bring a new dimension to your design needs with this versatile collection of beautiful flooring.





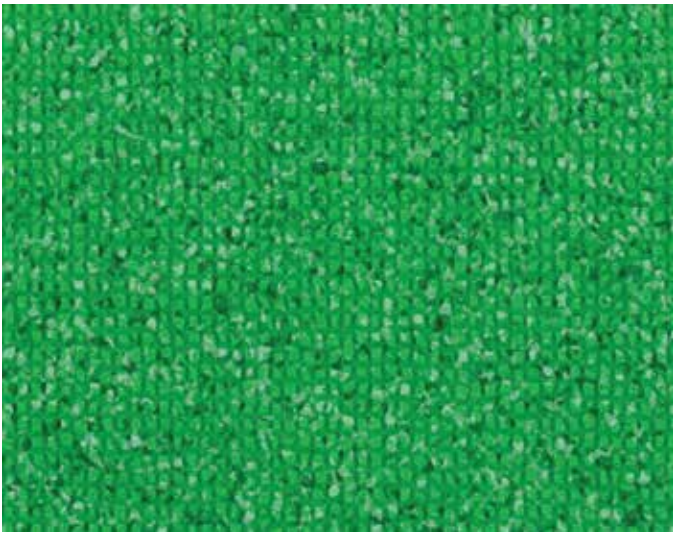
102

Red



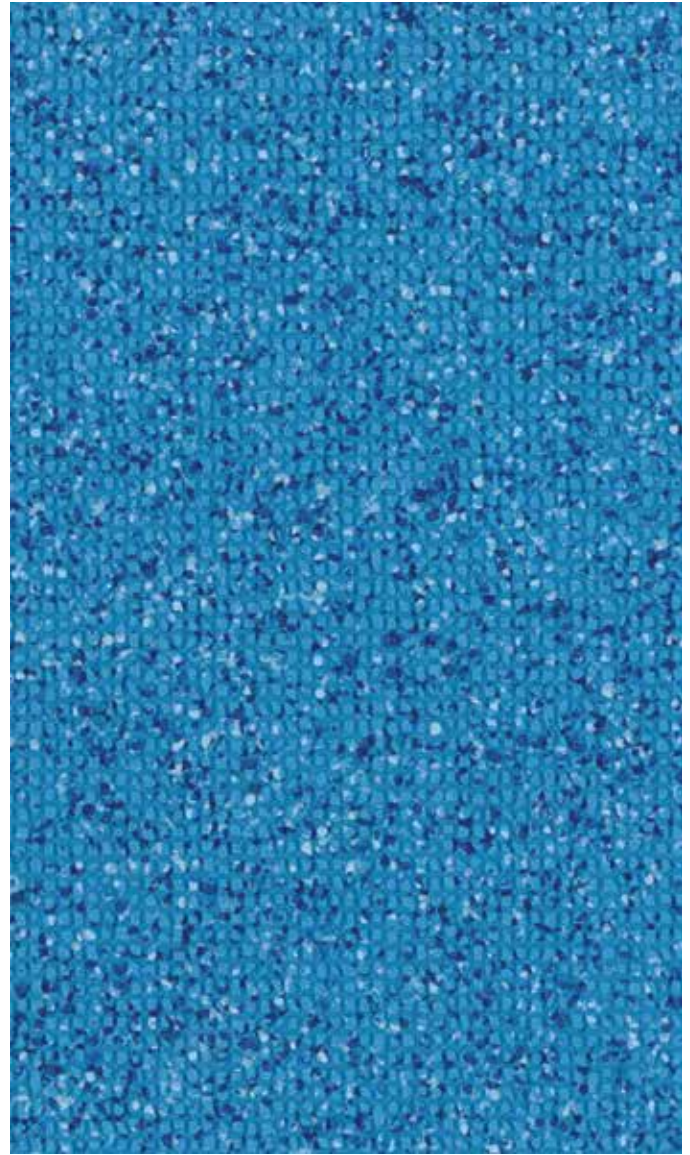
301

Yellow



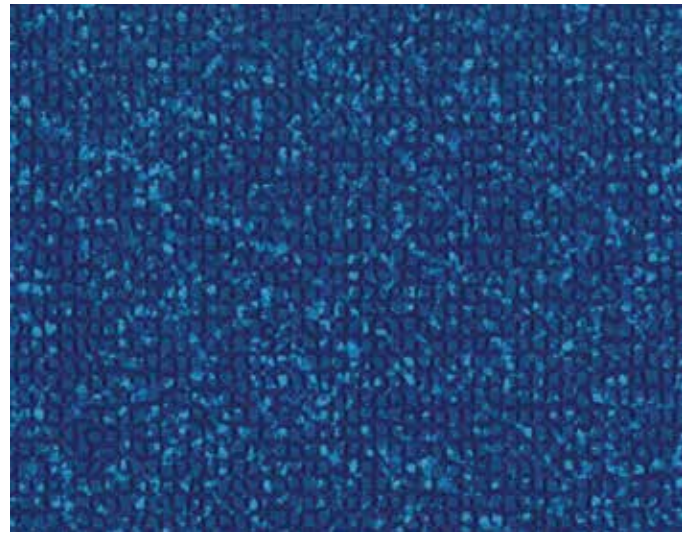
403

Green



501

Bright Blue



502

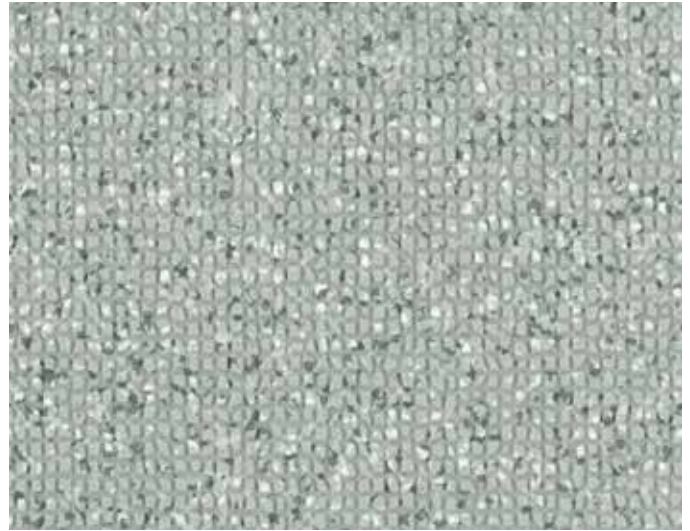
Dark Blue

The product colors you see are as accurate as current photography and printing techniques allow. We recommend viewing actual product samples before final color selection.



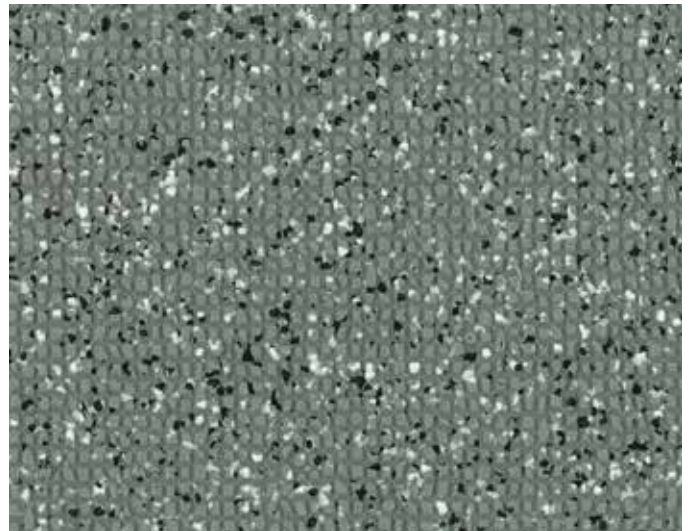
804

Light Tan



900

Light Gray



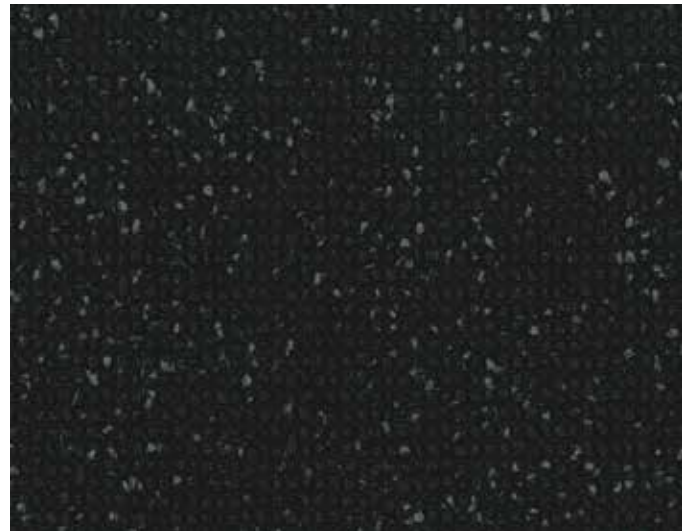
901

Dark Gray



803

Dark Tan



911

Black

Recommended Product Applications

The following Takiron application chart is provided to aid in understanding where Takiron Flooring is recommended for use. This application chart is a subjective recommendation and is predicated upon the adherence to proper installation techniques; specific location of installation; level and type of foot traffic; and the type and professional level of maintenance practiced on-site.

	MT Sheet	Pathways	WELS Sheet		MT Sheet	Pathways	WELS Sheet		MT Sheet	Pathways	WELS Sheet
Healthcare				Education				Hospitality			
Cafeterias		●	★	Auditorium				Balcony / Deck		★	
Corridors		★	★	Cafeterias		●	★	Conference Rooms			●
Dialysis			★	Classrooms			★	Corridors		★	●
Elevators		●		Computer Rooms				Dance Floor			
Emergency Department			★	Corridors		★	★	Dining Areas		●	●
Exam/Prep Room			★	Dormitories			●	Elevators		●	
Hydrotherapy Room	★	★		Entryways		★		Exercise Rooms		●	
Intensive Care			★	Food Service Area		★		Guest Bathrooms			★
Laboratories			★	Gymnasium				Guest Rooms			●
Lobbies		★	●	Laboratories			★	Lobbies			●
Neonatal Intensive Care			★	Lavatories			●	Lounges			●
Nurses Station			★	Libraries		●	●	Poolside	★	●	
Offices			★	Locker Rooms	★	★		Stairways/Landings		★	
Operating Room				Multipurpose		★		Vending Areas		★	
Patient Room			★	Offices			●	Office			
Pharmacy			★	Poolside	★	●		Computer Rooms			
Physical Therapy Room	★		●	Ramps (indoor)*		●		Conference Rooms			●
Ramps (indoor/outdoor)*		●		Ramps (outdoor)*		●		Corridors		★	●
Stairways/Landings		★		Showers	★	★		Dining Areas		●	●
Staff Lounge			★	Stairways/Landings		★		Elevators			
Storage/Utility Room		●	●	Teachers Lounge			★	Lavatories			●
Waiting Room			★	Utility/Storage Area			●	Lobbies		★	●
Retail				Institutional				Exterior			
Drug Store		●	●	Churches		●	●	Water Parks		★	
Indoor Mall Common Areas		★		Courthouses		●	●	Stadiums		★	
Sales Floor – Dept Store		●	●	Funerary Houses		●	●	Poolside	★	●	
Sales Floor – Mass Merchandiser		●	●	Libraries		●	●	Corridors	●	★	
Specialty Shops		●	●	Museums		●	●				
				Prisons		●	●				

- ★ Highly Recommended
- Recommended

Check with your local CBC Flooring representative to see if Takiron flooring is appropriate for your installation.

**Please see important information regarding Pathways ramp use.*

USGBC-LEED® Credits

(✓) Based on the 2009 LEED rating system and the overall scope of your project MT Sheet may contribute to your LEED scorecard.

Materials & Resources					Indoor Environmental Quality		
Product	Pre-consumer Recycled Content %	Post-consumer Recycled Content %	MR Credit 4: Recycled Content %	MR Credit 1.2: Building Reuse	MR Credit 2: Construction Waste Management	IEQ Credit 4.1: Low Emitting Materials – Adhesives	IEQ Credit 4.3: Low Emitting Materials – Flooring Systems
MT Sheet	10.5%	11.3%	16.5%	✓	✓	✓	✓

Visit our web site @ www.cbcflooring.com for installation instructions, maintenance procedures and detailed specifications.

Resistance to Staining & Chemicals per ASTM F925

The chart below shows results of 1-hour and 24-hour length of exposure to common chemicals and substances.

Chemicals	1 Hour	24 Hours
Acetic Acid – 28%	0	0
Hydrochloric Acid – 38%	0	0
Aqueous Calcium Chloride(CaCl ₂) – 5%	0	0
Aqueous HydroChloric Acid(HCL) – 10%	0	0
Aqueous Sodium Hydroxide(NaOH)– 10%	0	0
Aqueous Sodium Chloride(NaCl)	0	0
Sodium Hydroxide – 15%	0	0
Sulfuric Acid – 40%	0	0
Sulfuric Acid – 10%	0	0

Food	1 Hour	24 Hours
Carrot	0	0
Cola	0	0
Coffee	0	0
Ketchup	0	0
Hot Sauce	1	1
Milk	0	0
Mustard	0	0
Onion	1	1
Red Wine	1	1
Tea	1	1

Solvents	1 Hour	24 Hours
Gasoline	0	0
Isopropyl Alcohol	0	0
Kerosene	0	0
Mineral Spirits	0	0

Miscellaneous Stains & Chemicals	1 Hour	24 Hours
Betadine Skin Cleanser	0	0
Bleach	0	0
Hand Sanitizer (Alcohol Based)	0	0
Lip Stick	0	0
Machine Oil	0	0
Phenolic Disinfectant Cleaner	0	0
Quaternary Disinfectant Cleaner	0	0
Shampoo	0	0
Suntan Lotion	0	0
Urine	0	0

Changes 0: None 1: Slight 2: Moderate 3: Severe

MT Sheet passes ASTM Test Method F925, Resistance to Chemicals. F925 calls for exposure to chemicals for one hour. The chart above shows results for the required 1-hour and an even more severe testing protocol over a 24-hour period. MT Sheet is tested without any applied sealers or floor finishes and is cleaned with a cotton cloth after exposure. For the most accurate results, CBC AMERICA recommends using the customer's chemicals on actual product samples that have been treated with the maintenance products to be used on the finished floor. MT Sheet material for testing is readily available from CBC AMERICA.

Product Characteristics

Standard Spec	ASTM F 1303
Classification	Type II
Backing Class	Class B
Dimensions	6' Wide x 66' Long (1820 mm x 20 m)
Overall Thickness	0.11" (2.9 mm)
Packaging	44 SY per roll

Fire

ASTM E648 Critical Radiant Flux	Passes
------------------------------------	--------

Test Performance

ASTM F 1303 Standard Specification for Sheet Vinyl Floor Covering with Backing	Meets or Exceeds Requirements
ASTM D2047 Static Coefficient of Friction	≥ 0.6 ADA Compliant
ASTM F970 Static Load Limit	Passes
ASTM F925 Chemical Resistance	Passes
ASTM F137 Flexibility	Passes
ASTM F1914 Residual Indentation	Passes
ASTM F1514 Resistance to Heat	Passes
ASTM F1515 Resistance to Light	Passes

Warranty

Takiron products are covered by a limited 5-year warranty. Visit our website, www.cbcflooring.com

ISO 14001
Environmental
Commitment
Certified by QMS

ISO 9001
Quality
Assurance
Certified by QMS



MT Sheet

SLIP RESISTANT FLOORING

Takiron, Division of CBC AMERICAS Corp.
919-230-8700 • www.cbcflooring.com

and TAKIRON are the registered trademarks of TAKIRON CO., LTD. in the US and Canada

CBC Flooring



0814

Certified paper, contains post-consumer fiber.
 Acid-free recycled material. Printed with organic-based inks.