



Pathways

SLIP RESISTANT FLOORING



Pathways

SLIP RESISTANT FLOORING

An upscale look with practical applications

CBC Flooring is pleased to introduce Pathways by Takiron. Boasting a uniquely textured surface, it has been developed for both indoor and outdoor applications. Wet or dry, Pathways is an excellent flooring alternative in areas requiring extra traction.

It's no secret that a slip resistant floor is extremely important in areas with an increased risk for falling injuries. Balancing the need for a practical floor and the desire for a visually attractive solution has presented a challenging dilemma in the past. Well, look no further. We have the attractive and practical answer to your special flooring needs.



New Flooring New Solutions

Acoustically friendly, visually attractive, and exceptionally practical, Pathways balances the need for reduced slippage indoors or out, wet or dry, barefoot or with hard or soft-soled footwear, while maintaining a fresh, crisp appearance even after exposure to UV light.

Whether it's the distinct linear texture, practical functionality or the versatile flexibility, Pathways offers design solutions for the most challenging settings.

Minimize the risk of slip and fall injuries while bringing a new dimension to your design.



Design with Confidence

By now you've noticed Pathways doesn't look like any ordinary sheet flooring. When examined closely, the surface texture reveals a traditional herringbone pattern. Yet, when viewed over the expanse of an area, the distinctive refraction of light produces a soft linear visual effect.

Whether you choose the neutral earthen tones of taupe or haystack, the brilliant crimson or sunset, or any of the colors in-between, our 10 flexible color options enable you to create a truly distinctive practical floor.

Let Pathways tell your design story.

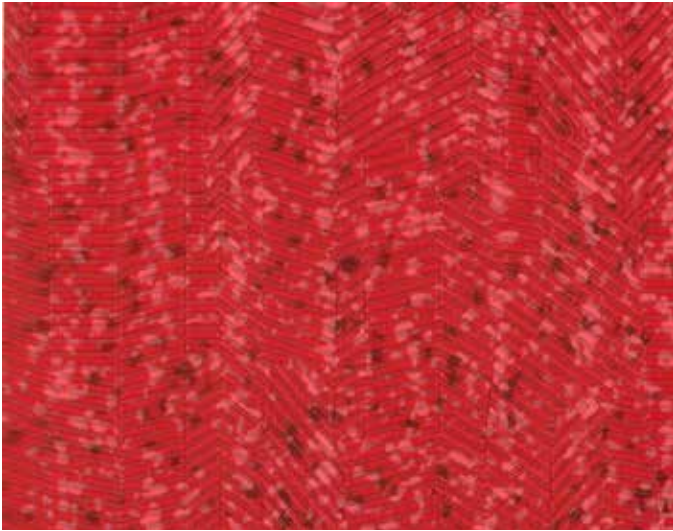
Discover the Difference

We invite you to discover the extraordinary. The quality, design and performance of Pathways sheet enables you to design with confidence by providing you with a practical floor of distinctive appearance.

Product Features

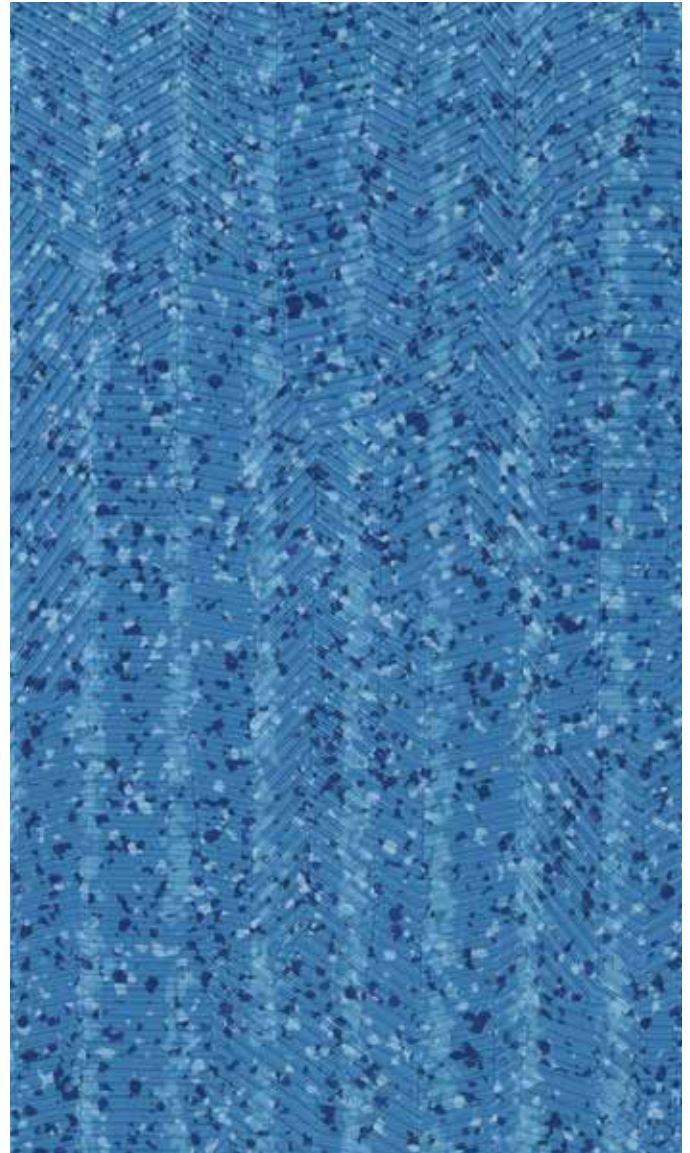
- Indoor/outdoor sheet flooring
- Wet or dry slip resistance
- Barefoot, hard or soft-soled foot traffic
- Easy maintenance
- Available in 10 colorways
- Can be heat welded





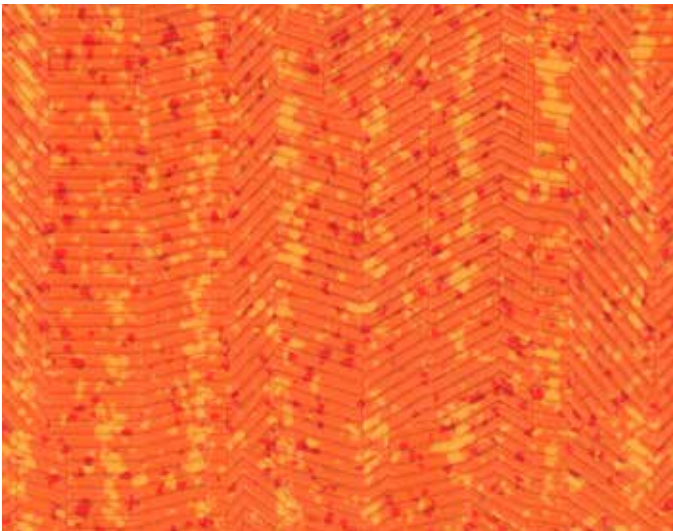
11

Crimson



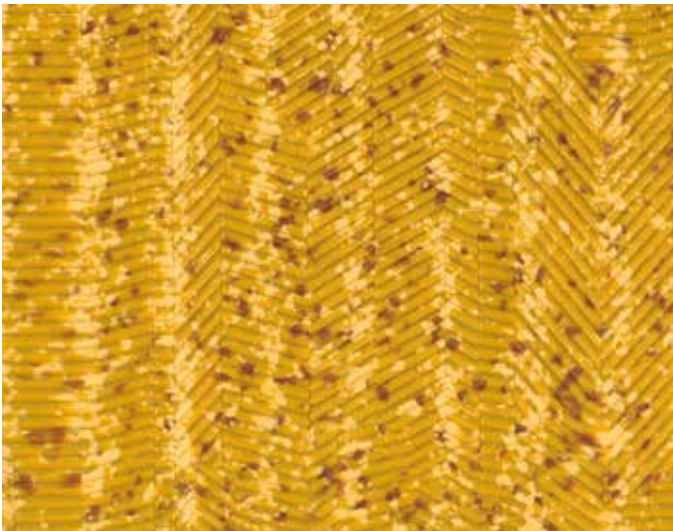
51

Heavenly



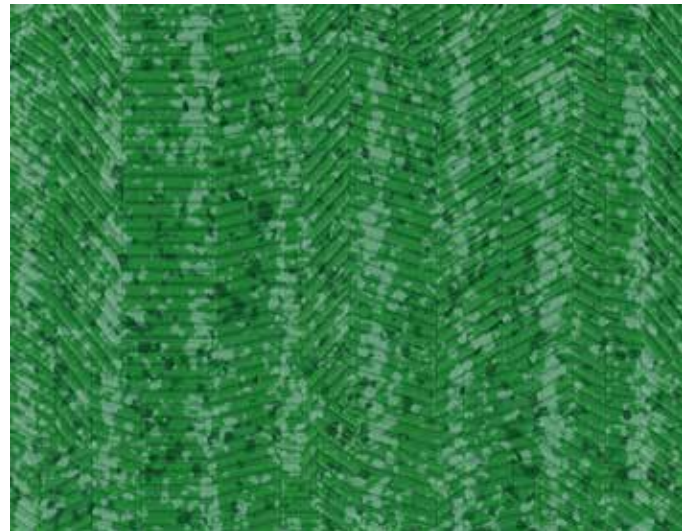
21

Sunset



31

Golden



41

Meadow

The product colors you see are as accurate as current photography and printing techniques allow. We recommend viewing actual product samples before final color selection.



91

Grey



81

Haystack



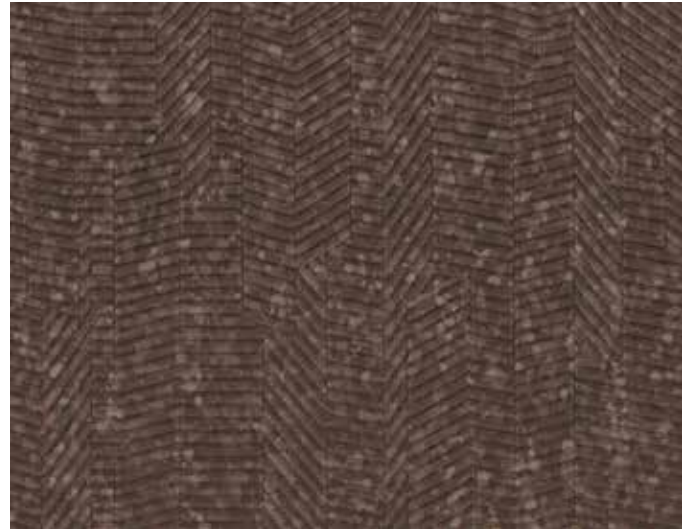
82

Taupe



92

Charcoal



83

Brown

Recommended Product Applications

The following Takiron application chart is provided to aid in understanding where Takiron Flooring is recommended for use. This application chart is a subjective recommendation and is predicated upon the adherence to proper installation techniques; specific location of installation; level of foot traffic; and the type and professional level of maintenance practiced on-site.

	Pathways	MT Sheet	WELS Sheet		Pathways	MT Sheet	WELS Sheet		Pathways	MT Sheet	WELS Sheet
Healthcare				Education				Hospitality			
Cafeterias	●		★	Auditorium				Balcony / Deck	★		
Corridors	★		★	Cafeterias	●		★	Conference Rooms			●
Dialysis			★	Classrooms			★	Corridors	★		●
Elevators	●			Computer Rooms				Dance Floor			
Emergency Department			★	Corridors	★		★	Dining Areas	●		●
Exam/Prep Room			★	Dormitories			●	Elevators	●		
Hydrotherapy Room	★	★		Entryways	★			Exercise Rooms	●		
Intensive Care			★	Food Service Area	★			Guest Bathrooms			★
Laboratories			★	Gymnasium				Guest Rooms			●
Lobbies	★		●	Laboratories			★	Lobbies			●
Neonatal Intensive Care			★	Lavatories			●	Lounges			●
Nurses Station			★	Libraries	●		●	Poolside	●	★	
Offices			★	Locker Rooms	★	★		Stairways/Landings	★		
Operating Room				Multipurpose	★			Vending Areas	★		
Patient Room			★	Offices			●	Office			
Pharmacy			★	Poolside	●	★		Computer Rooms			
Physical Therapy Room	★		●	Ramps (indoor)*	●			Conference Rooms			●
Ramps (indoor/outdoor)*	●			Ramps (outdoor)*	●			Corridors	★		●
Stairways/Landings	★			Showers	★	★		Dining Areas	●		●
Staff Lounge			★	Stairways/Landings	★			Elevators			
Storage/Utility Room	●		●	Teachers Lounge			★	Lavatories			●
Waiting Room			★	Utility/Storage Area			●	Lobbies	★		●
Retail				Institutional				Exterior			
Drug Store	●		●	Churches	●		●	Water Parks	★	★	
Indoor Mall Common Areas	★			Courthouses	●		●	Stadiums	★		
Sales Floor – Dept Store	●		●	Funeral Houses	●		●	Poolside	●	★	
Sales Floor – Mass Merchandiser	●		●	Libraries	●		●	Corridors	★		
Specialty Shops	●		●	Museums	●		●				
				Prisons	●		●				

- ★ Highly Recommended
- Recommended

Check with your local CBC Flooring representative to see if Takiron flooring is appropriate for your installation.

**Please see important information regarding Pathways ramp use.*

USGBC-LEED® Credits

(✓) Based on the 2009 LEED rating system and the overall scope of your project Pathways may contribute to your LEED scorecard.

Materials & Resources					Indoor Environmental Quality			
Product	Pre-consumer Recycled Content %	Post-consumer Recycled Content %	MR Credit 4: Recycled Content %	MR Credit 1.2: Building Reuse	MR Credit 2: Construction Waste Management	IEQ Credit 4.1: Low Emitting Materials – Adhesives	IEQ Credit 4.3: Low Emitting Materials – Flooring Systems	California Section 01350 Compliant
								FloorScore Certified FS-03268
Pathways	10.2%	11%	16.1%	✓	✓	✓	✓	✓

Resistance to Staining & Chemicals per ASTM F925

The chart below shows results of 1-hour and 24-hour length of exposure to common chemicals and substances.

Chemicals	1 Hour	24 Hours
Acetic Acid – 28%	0	0
Hydrochloric Acid – 38%	0	0
Aqueous Calcium Chloride(CaCl ₂) – 5%	0	0
Aqueous HydroChloric Acid(HCL) – 10%	0	0
Aqueous Sodium Hydroxide(NaOH)– 10%	0	0
Aqueous Sodium Chloride(NaCl)	0	0
Sodium Hydroxide – 15%	0	0
Sulfuric Acid – 40%	0	0
Sulfuric Acid – 10%	0	0

Food	1 Hour	24 Hours
Carrot	0	0
Cola	0	0
Coffee	0	0
Ketchup	0	0
Hot Sauce	1	1
Milk	0	0
Mustard	0	0
Onion	1	1
Red Wine	1	1
Tea	1	1

Solvents	1 Hour	24 Hours
Gasoline	0	0
Isopropyl Alcohol	0	0
Kerosene	0	0
Mineral Spirits	0	0

Miscellaneous Stains & Chemicals	1 Hour	24 Hours
Betadine Skin Cleanser	0	0
Bleach	0	0
Hand Sanitizer (Alcohol Based)	0	0
Lip Stick	0	0
Machine Oil	0	0
Phenolic Disinfectant Cleaner	0	0
Quaternary Disinfectant Cleaner	0	0
Shampoo	0	0
Suntan Lotion	0	0
Urine	0	0

Changes 0: None 1: Slight 2: Moderate 3: Severe

Pathways passes ASTM Test Method F925, Resistance to Chemicals. F925 calls for exposure to chemicals for one hour. The chart above shows results for the required 1-hour and an even more severe testing protocol over a 24-hour period. Pathways is tested without any applied sealers or floor finishes and is cleaned with a cotton cloth after exposure. For the most accurate results, CBC AMERICA recommends using the customer's chemicals on actual product samples that have been treated with the maintenance products to be used on the finished floor. Pathways material for testing is readily available from CBC AMERICA.

Product Characteristics

Standard Spec	ASTM F 1303
Classification	Type II
Backing Class	Class B
Dimensions	6' Wide x 66' Long (1820 mm x 20 m)
Overall Thickness	0.10" (2.5 mm)
Packaging	44 SY per roll

Fire

ASTM E648 Critical Radiant Flux	Passes
------------------------------------	--------

Test Performance

ASTM F 1303 Standard Specification for Sheet Vinyl Floor Covering with Backing	Meets or Exceeds Requirements
ASTM D 2047 Static Coefficient of Friction	≥ 0.8 ADA Compliant (wet and dry)
ASTM F 970 Static Load Limit	Passes
ASTM F 925 Chemical Resistance	Passes
ASTM F 137 Flexibility	Passes
ASTM F1 914 Residual Indentation	Passes
ASTM F 1514 Resistance to Heat	Passes
ASTM F 1515 Resistance to Light	Passes
CA 01350 VOC Emissions	Passes FloorScore Certified FS-03268

Warranty

Pathways is covered by a limited 5-year warranty. Visit our website, www.cbcbflooring.com for complete details.





Pathways

SLIP RESISTANT FLOORING

Takiron, Division of CBC AMERICAS Corp.
919-230-8700 • www.cbcflooring.com

and TAKIRON are the registered trademarks of TAKIRON CO., LTD. in the US and Canada

CBC Flooring



0814

Certified paper, contains post-consumer fiber.
 Acid-free recycled material. Printed with organic-based inks.