



Exclusively from  
**CBC Flooring**

# TOLI Homogeneous Vinyl Tile

FASOLPLUS + LINOTESTA + VIALE



COMMERCIAL  
TILE FLOORING

CBC Flooring

# TOLI HVT



## **A Colorful History and Future.**

For years, architects and designers have relied on TOLI's homogeneous vinyl tile for their most demanding projects. Given the wide array of colorways, FasolPlus, Linotesta and Viale transcend all commercial settings – especially healthcare, education, retail and corporate.

The allure of these products extends well beyond their color palettes as they were developed to meet the demanding needs of high-traffic commercial interiors. And their through-pattern construction means their beauty is more than skin deep.

**Trust the experience. Trust TOLI.**

# Trust the experience™.

Our colors are vibrant through and through. Literally.

Thanks to through-pattern construction, the color literally runs throughout the entire thickness of every single tile. And that means the rich and bright colors will stand the test of time even in high traffic areas.

Trust the experience. Trust TOLI.



## TOLI® Homogeneous Vinyl Tile

- **Factory applied finish** for protection during installation
- **Through-pattern construction** – pattern goes all the way through the tile
- **18" x 18" oversized tile** – eliminates 60% of the seams found with standard VCT
- Rich vibrant and saturated colors creating a subtle organic look
- Tiles can be installed in the same direction creating a monolithic, organic appearance
- Easy to water jet or sonic cut for inlaid designs
- Quieter underfoot than standard VCT
- ASTM F 970 – 1,000 PSI compared to standard VCT
- No stripping required after installation

### IDEAL FOR HIGH TRAFFIC APPLICATIONS



HEALTHCARE



EDUCATION



RETAIL

**GET SAMPLES FAST 919-230-8700 cbcflooring.com**

Questions? Give us a call, we're ready to help you create your next great space.

# LINOTESTA



532 Misty



516 Limestone



508 Mushroom



513 Steel



517 Iron



522 Dusty



514 Shadow



531 Sage



510 Anise



515 Shadow



520 Blue Wave

# FASOLPLUS



2007 Cotton



2038 Silver



2041 Gunmetal



2073 Cove

# FASOLPLUS



2061 Pebble



2010 Flax



2011 Parchment



2012 Buttermilk



2062 Taupe



2042 Latte



2050 Straw



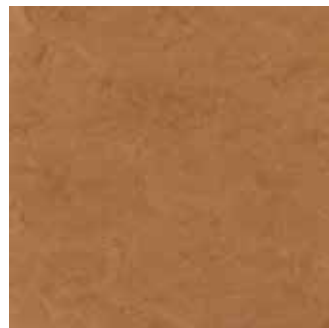
2022 Wheat



2072 Boulder



2074 Mineral



2023 Caramel



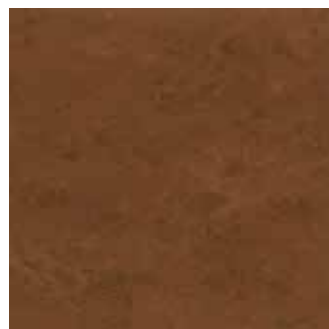
2024 Melon



2040 Ebony



2063 Java



2043 Coppertone



2026 Spice

# FASOLPLUS



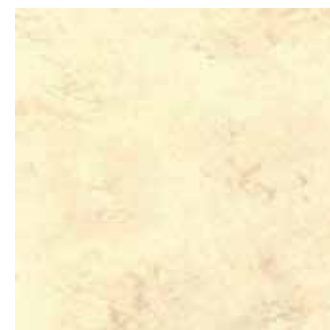
2029 Sunflower



2037 Orchid



2034 Sky



2011 Parchment



2025 Pumpkin



2068 Raspberry



2035 Twilight



2050 Straw



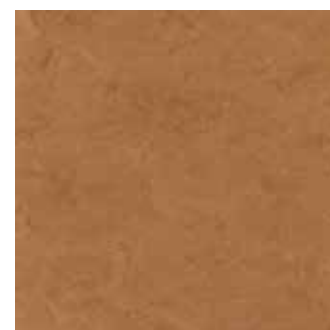
2066 Tangerine



2002 Sangria



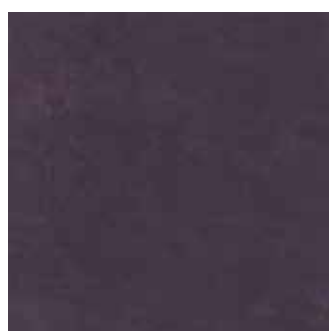
2006 Blueberry



2023 Caramel



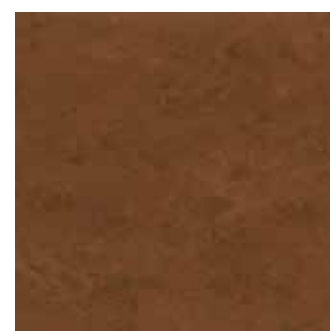
2076 Koi



2071 Grape



2057 Sapphire



2043 Coppertone

# VIALE



608

Buff



609

Suede



6001

Khaki



TOLI Linotesta



607

Oyster



653

Fawn



654

Charcoal

# Recommended Product Applications

The following TOLI application chart is provided to aid in understanding where FasolPlus, Linotesta and Viale Flooring products are recommended for use. This application chart is a subjective recommendation and is predicated upon the adherence to proper installation techniques; specific location of installation; level of foot traffic; and the type and professional level of maintenance practiced on-site.

	Mature Select	Linotesta / FasolPlus / Viale	Lightwood	Piesta
<b>Healthcare</b>				
Cafeterias	★	★	★	★
Corridors	★	★	★	★
Dialysis	★	●	●	●
Elevators		★	●	★
Emergency Department	★	●	●	●
Exam/Prep Room	★	●	●	●
Hydrotherapy Room	●	●	●	●
Intensive Care	★	●	●	●
Laboratories	●	●	●	●
Lobbies	●	★	★	★
Neonatal Intensive Care	★	●	●	●
Nurses Station	★	★	★	★
Offices	●	★	★	★
Operating Room				
Patient Room	★	★	★	★
Pharmacy	★	★	★	★
Physical Therapy Room	●	●	●	●
Ramps (indoor/outdoor)				
Stairways/Landings (indoor/outdoor)				
Staff Lounge	★	★	★	★
Storage/Utility Room	●	★	●	★
Waiting Room	★	★	★	★

## Retail

Drug Store	●	★	★	★
Indoor Mall Common Areas		★	●	★
Sales Floor – Dept Store	●	★	★	★
Sales Floor – Mass Merchandiser		●	●	●
Specialty Shops		★	★	

## Education

	Mature Select	Linotesta / FasolPlus / Viale	Lightwood	Piesta
Auditorium		★	●	★
Cafeterias	★	★	★	★
Classrooms	●	★	★	★
Computer Rooms		●	●	●
Corridors	●	★	★	★
Dormitories	●	★	★	★
Entryways		★	★	★
Food Service Area		●	●	●
Gymnasium				
Laboratories	●	●	●	●
Lavatories	●	●		●
Libraries	●	★	★	★
Locker Rooms				
Multipurpose		●	●	●
Offices	●	★	★	★
Ramps (indoor)				
Ramps (outdoor)				
Showers				
Stairways/Landings				
Teachers Lounge	●	★	★	★
Utility/Storage Area	●	★	●	★

## Institutional

Churches	●	★	★	★
Courthouses	●	★	★	★
Funeral Houses	●	★	★	●
Libraries	●	★	★	★
Museums	●	★	★	★
Prisons		●	●	

## Hospitality

	Mature Select	Linotesta / FasolPlus / Viale	Lightwood	Piesta
Conference Rooms	●	●	★	●
Corridors	●	★	★	★
Dance Floor			●	
Dining Areas	★	★	★	★
Elevators		●	●	●
Exercise Rooms				
Guest Bathrooms	●	●	●	●
Guest Rooms	●	●	★	●
Lobbies	●	★	★	★
Lounges	●	★	★	★
Stairways/Landings				
Vending Areas		●	●	●

## Office

Computer Rooms		●		●
Conference Rooms	●	★	★	★
Corridors	●	★	★	★
Dining Areas	●	★	★	★
Elevators		●	●	●
Lavatories	●	●	●	●
Lobbies	●	★	★	★
Offices	●	★	★	★
Stairways/Landings				
Storage Rooms		★	●	

- ★ Highly Recommended
- Recommended

## USGBC-LEED Credits

Product	Materials & Resources					Indoor Environmental Quality		
	MR Credit 1.2: Building Reuse	MR Credit 2: Construction Waste Management	MR Credit 3.1: Material Reuse	Recycled Content Pre-Consumer	Recycled Content Post-Consumer	MR Credit 4: Recycled Content Contribution (Sum of post-consumer + 1/2 pre-consumer)	IEQ Credit 4.1: Low Emitting Materials - Adhesives	IEQ Credit 4.3: Low Emitting Materials - Flooring Systems
TOLI HVT	✓	✓	✓	50%	0%	25%	✓	✓

(✓) Based on the 2009 LEED rating system and the overall scope of your project TOLI HVT may contribute to your LEED scorecard.



## Resistance to Staining & Chemicals per ASTM F 925

Chemicals	1 Hour	24 Hours
Acetic Acid – 28%	0	0
Hydrochloric Acid – 38%	0	0
Ammonium Hydroxide – 10%	0	0
Ammonium Hydroxide – 30%	0	0
Potassium Hydroxide – 15%	0	0
Sodium Hydroxide – 15%	0	0
Sodium Hydroxide – 50%	0	0
Sulfuric Acid – 40%	1	1
Sulfuric Acid – 10%	2	3

Hospital Stains & Chemicals	1 Hour	24 Hours
Aniline Blue – 2.5	3	3
Basic Fuchsin	0	1
Carbol Fuchsin	3	3
Dialysis Solution	0	0
Eosin – 1%	2	2
Giesma Blood Stain	1	1
Hema 3 Solution	0	0
Hematoxylin – 5%	0	1
Hydrogen Peroxide – 30%	0	0
Iodine Tincture	1	1
Methylene Blue	1	1
Potassium Permanganate – .5%	0	1
Provine-Iodine	1	2
Rhondamine B. Base	0	2
Urea Solution	0	0
Wright's Blood Stain	1	2

Solvents	1 Hour	24 Hours
Ethyl (Denatured) Alcohol	0	0
Formaldehyde – 37%	0	0
Isopropyl Alcohol	0	0
Mineral Spirits	0	0
Turpentine	0	0

Miscellaneous Stains & Chemicals	1 Hour	24 Hours
Betadine Skin Cleanser	0	0
Hand Sanitizer (Alcohol Based)	0	0
Phenolic Disinfectant Cleaner	0	0
Quaternary Disinfectant Cleaner	0	0
Bleach	0	0

Changes 0: None 1: Slight 2: Moderate 3: Severe

FasolPlus, Linotesta and Viale pass ASTM Test Method F 925, Resistance to Chemicals. F 925 calls for exposure to chemicals for one hour. Fasolplus, Linotesta and Viale are tested without any applied sealers or floor finishes and are cleaned with a cotton cloth after exposure. For the most accurate results, CBC AMERICA recommends using the customer's chemicals on actual product samples that have been treated with the maintenance products to be used on the finished floor. FasolPlus, Linotesta and Viale material for testing is readily available from CBC AMERICA.

## Product Characteristics

Standard Spec	ASTM F 1066
Classification	Class II
Nominal Dimensions	17.7" x 17.7" (450mm x 450mm)
Overall Thickness	3.0mm (0.120")
Packaging	30.5 SF per Carton (14 pieces)

## Fire

ASTM E 648 Critical Radiant Flux	Class 1 (>0.45/sq cm)
ASTM E 662 Smoke Generation	<450 Flaming & Non-Flaming

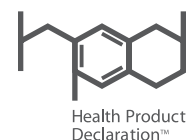
## Test Performance

ASTM F 1066 Standard Spec for Vinyl Composition Floor Tile	Meets or Exceeds Requirements
ASTM F 925 Chemical Resistance	Passes
ASTM F 970 (Modified) Static Load Limit	1,000 PSI
ASTM C 1028 Static Coefficient of Friction	≥0.6 ADA Compliant
ASTM F 2199 Dimensional Stability	Passes
ASTM F 1265 Resistance to Impact	Passes
ASTM F 1304 Deflection of Tile	Passes
ASTM F 1514 Resistance to Heat	Passes
CA 01350 VOC Emissions	Passes FloorScore Certified FS-03026 HPDs currently available for FasolPlus & Linotesta

## Warranty

TOLI HVT is covered by a limited 10-year warranty. Visit our website, [www.cbccflooring.com](http://www.cbccflooring.com) for complete details.

CBC Flooring is ISO 9001 and 14001 certified





TOLI International is a division of CBC AMERICA LLC

Exclusively from  
**CBC Flooring**

# TOLI Homogeneous Vinyl Tile

FASOLPLUS + LINOTESTA + VIALE



COMMERCIAL  
TILE FLOORING



CERTIFIED BY  
SCS Global Services

## **CBC Flooring is committed to advance sustainability**

by marketing the finest flooring products from around the globe. Our EcoVision™ Policy supports environmental responsibility for the world we all share. We strive to reduce waste, limit the consumption of natural resources and preserve Earth's environment for future generations.

**For more information and sample requests,  
contact CBC Flooring:**

**919-230-8700**

**[www.cbcflooring.com](http://www.cbcflooring.com)**