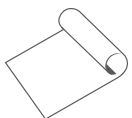




Exclusively from
CBC Flooring

TOLI Mature[®] Select[™]

WOODGRAIN + NATURAL FLECK



COMMERCIAL
SHEET FLOORING

CBC Flooring

Mature Select



Beauty and Performance.

TOLI Mature Select combines the beauty you expect and the performance you demand for your high-traffic flooring applications. From its patent-pending, two-tier wear layer that provides added protection and durability while still letting the products' wood and natural visuals show through, to the clarity of its print film, to its heat fused compressed backing with fiberglass reinforcement, Mature Select continues to provide the quality flooring that you have come to expect from TOLI.

Trust the experience™.

When you step into a space, it's the experience that matters.

When you're choosing the flooring to complete that space, experience matters even more.

For more than 95 years TOLI has been the premier manufacturer of the world's most realistic vinyl floor coverings.

Mature Select print film is produced to exacting Japanese standards using the finest offset lithography presses to deliver unmatched detail and realism. Our unique, TOLI ClearGuard™ wear layer delivers invisible protection that enables the beauty to shine through but stands up to high-traffic environments for decades.

Trust the experience. Trust TOLI.



TOLI® ClearGuard™ wear layer

Our patent-pending, two-tier wear layer protects the industry's most beautiful print film from stains, scuffs and fading for years.

- No waxing, no stripping. And none of the chemicals, water or energy.
- Antibacterial, additive-free coating that won't support germ growth or development.
- UV-Coating for superior light stability to prevent fading or yellowing.

Commercial (0.5mm) wear layer provides durability and a second-line defense against stains.

Print film created from unique, true wood and natural visuals for the industry's most realistic and beautiful sheet flooring.

Heat-fused compressed backing with fiberglass reinforcement resists tears, gouges and indentation while improving pliability for easier installation and flash coving.

Real beauty, real value. The sheet floor that looks better and lasts longer to lower your lifecycle cost.

IDEAL FOR HIGH TRAFFIC APPLICATIONS



HEALTHCARE



EDUCATION



RETAIL

GET SAMPLES FAST 919-230-8700 cbcflooring.com

Questions? Give us a call, we're ready to help you create your next great space.

WOODGRAIN



771 Light Vermont Maple



741

Natural Maple



771

Light Vermont Maple



772

Classic Vermont Maple



773

Deep Vermont Maple



761 Light Beechwood



762 Stained Beechwood



732 Mellow Oak



754 Dark Zebrawood



754 Dark Zebrawood

WOODGRAIN



451

Light Oak



471

Honey Oak



452

Red Oak



454

Dark Oak



452 Red Oak



492 Natural American Cherry



531 Light Brazilian Cherry



532 Dark Brazilian Cherry



508 Rosewood



508 Rosewood

NATURAL FLECK



363

Seashell



364

Oar



361

Sea Salt



362

Ocean Gray



369

Sea Foam



370

Sea Green



365

Coastal Plain



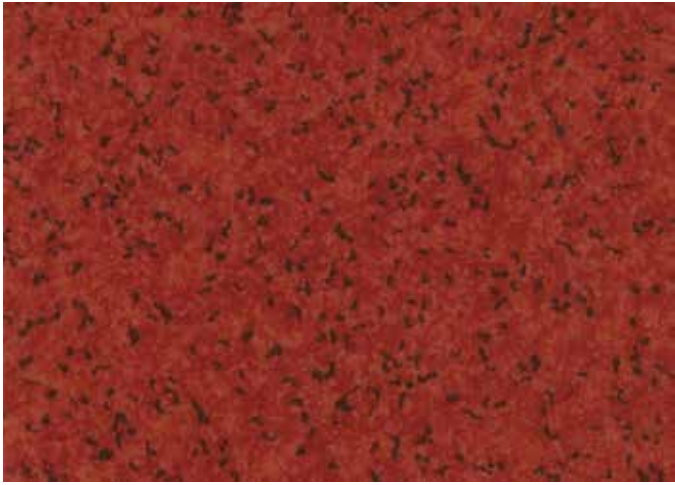
366

Pier



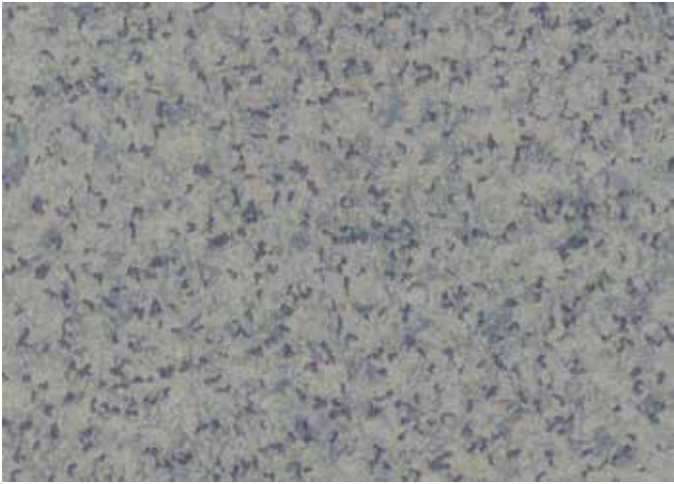
367

Jetty



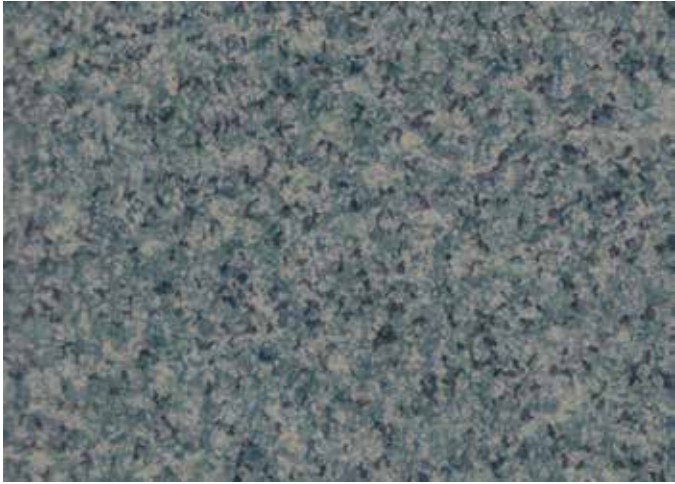
368

Windjammer



371

Tidal Pool



372

Deep Sea

Recommended Product Applications

The following TOLI application chart is provided to aid in understanding where Mature Select Sheet Flooring products are recommended for use. This application chart is a subjective recommendation and is predicated upon the adherence to proper installation techniques; specific location of installation; level of foot traffic; and the type and professional level of maintenance practiced on-site.

Healthcare

	Mature Select	Linotesta / FasolPlus / Viale	Lightwood	Piesta
Cafeterias	★	★	★	★
Corridors	★	★	★	★
Dialysis	★	●	●	●
Elevators		★	●	★
Emergency Department	★	●	●	●
Exam/Prep Room	★	●	●	●
Hydrotherapy Room	●	●	●	●
Intensive Care	★	●	●	●
Laboratories	●	●	●	●
Lobbies	●	★	★	★
Neonatal Intensive Care	★	●	●	●
Nurses Station	★	★	★	★
Offices	●	★	★	★
Operating Room				
Patient Room	★	★	★	★
Pharmacy	★	★	★	★
Physical Therapy Room	●	●	●	●
Ramps (indoor/outdoor)				
Stairways/Landings (indoor/outdoor)				
Staff Lounge	★	★	★	★
Storage/Utility Room	●	★	●	★
Waiting Room	★	★	★	★

Retail

	Mature Select	Linotesta / FasolPlus / Viale	Lightwood	Piesta
Drug Store	●	★	★	★
Indoor Mall Common Areas		★	●	★
Sales Floor – Dept Store	●	★	★	★
Sales Floor – Mass Merchandiser		●	●	●
Specialty Shops		★	★	

Education

	Mature Select	Linotesta / FasolPlus / Viale	Lightwood	Piesta
Auditorium		★	●	★
Cafeterias	★	★	★	★
Classrooms	●	★	★	★
Computer Rooms		●	●	●
Corridors	●	★	★	★
Dormitories	●	★	★	★
Entryways		★	★	★
Food Service Area		●	●	●
Gymnasium				
Laboratories	●	●	●	●
Lavatories	●	●		●
Libraries	●	★	★	★
Locker Rooms				
Multipurpose		●	●	●
Offices	●	★	★	★
Ramps (indoor)				
Ramps (outdoor)				
Showers				
Stairways/Landings				
Teachers Lounge	●	★	★	★
Utility/Storage Area	●	★	●	★

Institutional

	Mature Select	Linotesta / FasolPlus / Viale	Lightwood	Piesta
Churches	●	★	★	★
Courthouses	●	★	★	★
Funeral Houses	●	★	★	●
Libraries	●	★	★	★
Museums	●	★	★	★
Prisons		●	●	

Hospitality

	Mature Select	Linotesta / FasolPlus / Viale	Lightwood	Piesta
Conference Rooms	●	●	★	●
Corridors	●	★	★	★
Dance Floor			●	
Dining Areas	★	★	★	★
Elevators		●	●	●
Exercise Rooms				
Guest Bathrooms	●	●	●	●
Guest Rooms	●	●	★	●
Lobbies	●	★	★	★
Lounges	●	★	★	★
Stairways/Landings				
Vending Areas		●	●	●

Office

	Mature Select	Linotesta / FasolPlus / Viale	Lightwood	Piesta
Computer Rooms		●		●
Conference Rooms	●	★	★	★
Corridors	●	★	★	★
Dining Areas	●	★	★	★
Elevators		●	●	●
Lavatories	●	●	●	●
Lobbies	●	★	★	★
Offices	●	★	★	★
Stairways/Landings				
Storage Rooms		★	●	

- ★ Highly Recommended
- Recommended

USGBC-LEED Credits

Product	Materials & Resources					Indoor Environmental Quality		
	MR Credit 1.2: Building Reuse	MR Credit 2: Construction Waste Management	MR Credit 3.1: Material Reuse	Recycled Content Pre-Consumer	Recycled Content Post-Consumer	MR Credit 4: Recycled Content Contribution (Sum of post-consumer + 1/2 pre-consumer)	IEQ Credit 4.1: Low Emitting Materials - Adhesives	IEQ Credit 4.3: Low Emitting Materials - Flooring Systems
Mature	✓	✓	✓	16%	10%	18%	✓	✓

(✓) Based on the 2009 LEED rating system and the overall scope of your project Mature Sheet may contribute to your LEED scorecard.

Resistance to Staining & Chemicals per ASTM F 925

Chemicals	1 Hour	24 Hours
Acetic Acid – 28%	0	0
Hydrochloric Acid – 38%	0	0
Ammonium Hydroxide – 10%	0	0
Ammonium Hydroxide – 30%	0	0
Potassium Hydroxide – 15%	0	0
Sodium Hydroxide – 15%	0	0
Sodium Hydroxide – 50%	0	0
Sulfuric Acid – 40%	2	2
Sulfuric Acid – 10%	2	2

Hospital Stains & Chemicals	1 Hour	24 Hours
Aniline Blue – 2.5	0	0
Basic Fuchsin	3	3
Carbol Fuchsin	3	3
Dialysis Solution	0	0
Eosin – 1%	3	3
Giesma Blood Stain	3	3
Hema 3 Solution	0	0
Hematoxylin – 5%	0	1
Hydrogen Peroxide – 30%	0	0
Iodine Tincture	2	3
Methylene Blue	0	1
Potassium Permanganate – .5%	3	3
Provine-Iodine	0	0
Rhondamine B. Base	2	3
Urea Solution	0	0
Wright's Blood Stain	3	3

Solvents	1 Hour	24 Hours
Ethyl (Denatured) Alcohol	0	0
Formaldehyde – 37%	0	1
Isopropyl Alcohol	1	1
Mineral Spirits	0	0
Turpentine	0	0

Miscellaneous Stains & Chemicals	1 Hour	24 Hours
Betadine Skin Cleanser	0	0
Hand Sanitizer (Alcohol Based)	1	1
Phenolic Disinfectant Cleaner	0	0
Quaternary Disinfectant Cleaner	0	0
Bleach	0	0

Changes 0: None 1: Slight 2: Moderate 3: Severe

Mature Select passes ASTM Test Method F 925, Resistance to Chemicals. F 925 calls for exposure to chemicals for one hour. Mature is tested without any applied sealers or floor finishes and is cleaned with a cotton cloth after exposure. For the most accurate results, CBC AMERICA recommends using the customer's chemicals on actual product samples that have been treated with the maintenance products to be used on the finished floor. Mature material for testing is readily available from CBC AMERICA.

Product Characteristics

Standard Spec	ASTM 1303
Classification	Type I Grade 1
Backing Class	Class B
Nominal Dimensions	6' Wide x 66' Long (1828mm x 20m)
Roll Size	44 sq yards
Overall Thickness	2.0mm
Wear Layer Thickness	0.5mm

Fire

ASTM E648 Critical Radiant Flux	Passes
ASTM E 662 Smoke Generation	<450 Passes

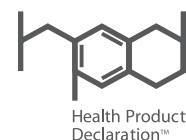
Test Performance

ASTM F 1303 Standard Spec for Sheet Vinyl Floor Covering with backing	Exceeds Requirements
ASTM F 925 Chemical Resistance	Exceeds Requirements
ASTM F 970 Static Load Limit	Exceeds Requirements
ASTM C 1028 Static Coefficient of Friction	≥0.6 ADA Compliant
ASTM F 137 Flexibility	Exceeds Requirements
ASTM F 1514 Resistance to Heat	Passes <ΔE 1.0
ASTM F 1515 Resistance to Light	Passes <ΔE 2.25
CA 01350 VOC Emissions	Passes FloorScore Certified FS-03031

Warranty

TOLI Mature Select is covered by a limited 15-year warranty. Visit our website, www.cbcflooring.com for complete details.

CBC Flooring is ISO 9001 and 14001 certified



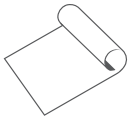


TOLI International is a division of CBC AMERICA LLC

Exclusively from
CBC Flooring

TOLI Mature[®] Select[™]

WOODGRAIN + NATURAL FLECK



COMMERCIAL
SHEET FLOORING



CERTIFIED BY
SCS Global Services

CBC Flooring is committed to advance sustainability

by marketing the finest flooring products from around the globe. Our EcoVision[™] Policy supports environmental responsibility for the world we all share. We strive to reduce waste, limit the consumption of natural resources and preserve Earth's environment for future generations.

**For more information and sample requests,
contact CBC Flooring:**

919-230-8700

www.cbcflooring.com