

Safety Precautions

- ◆ When performing any wet maintenance, always put out wet floor signs and caution tape. Remove when finished.
- ◆ Refer to each product's MSDS for use of personal protective equipment.

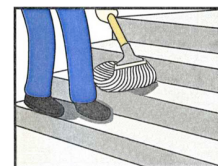


Newly Installed Floor Care

- ◆ Permit foot traffic on the new floor after waiting the time referenced for the adhesive used. If unsure, wait 12 hours.
- ◆ Keep furniture, fixtures and rolling traffic off the new floor for 48 hours with trowel applied adhesives.
- ◆ Allow immediate foot and rolling traffic when the flooring is installed using EcoSpray or Opti-Tape adhesives.
- ◆ Always use plywood or other boards when moving heavy objects across the treads.
- ◆ Remove adhesive residue with a clean white cloth dampened with mineral spirits. Follow label and MSDS instructions.
- ◆ Sweep, dust mop or vacuum the floor to remove all loose dirt and grit. Lightly damp mop with well wrung mop as needed.
- ◆ Wait 3-4 days before wet washing and scrubbing the new floor. This will allow the adhesive to fully cure.

Preventative Floor Care

- ◆ Use proper walk-off matting at all entries and where needed to trap soiling and contaminants. Mats should be appropriate for soil load, weather conditions and have a non-staining backing.
- ◆ Use floor protectors on all furniture legs. Floor glides should be at least **1 inch in diameter**.
- ◆ Castors should have large diameter wheels with a smooth **flat tread surface**.
- ◆ Do not use narrow castors or those with a curved tread.
- ◆ **NOTE: Clean stairs from the top and work down. Always stand on the step below. (fig. 1)**
- ◆ During cleaning, do not allow traffic on the wet areas until the surface is cleaned and completely dry.



(fig. 1)

NOTE: Quality maintenance products like those from **Hilway Direct** or an equal are recommended.

Initial / Periodic Cleaning (After 3-4 days)

- ◆ Sweep or dust mop to remove dirt and grit. Do not use treated dust mops.
- ◆ Deep clean the floor using **Hilway Direct Neutral Cleaner** (10 oz./gal.). For heavily soiled areas, use Hilway Direct AllSafe Stripper (6-10 oz./gal.). Let solution stand 5-10 minutes. Do not let solution dry on floor.
- ◆ As needed scrub treads using a deck brush or mop.
- ◆ Rinse the mop in clean water after each mopping pass to remove picked up soil. Change out rinse water often.
- ◆ For outdoor areas, use a soft bristle brush or high pressure sprayer (2,800 psi Max.) for optimal cleaning.
- ◆ Thoroughly rinse the floor with clean water and allow to dry. Repeat rinse process as needed to remove all residue.

Routine Maintenance (Daily or as needed)

- ◆ Sweep or dust mop to remove dirt and grit. Do not use treated dust mops.
- ◆ Clean the floor using **Hilway Direct Neutral Cleaner** in cool water. Follow label instructions.
- ◆ As needed scrub treads using a deck brush or mop.
- ◆ For outdoor areas, use a soft bristle brush or high pressure sprayer (2,800 psi max.) for optimal cleaning.
- ◆ As needed scrub treads with a deck brush and cleaner to retain appearance.

Exterior Winter Cleaning

- ◆ Do not walk on floor or stair treads covered with snow or ice.
- ◆ Anti-icing measures:
 - ◆ Liberally apply calcium chloride when snow is predicted. Do NOT use rock salt.
 - ◆ Sweep off loose snow with a broom. Do NOT use shovels or other sharp snow removal tools.
 - ◆ **After snow and/or ice is on the surface, apply calcium chloride pellets to begin melting process. Remove with broom.**
- ◆ After melting – remove snow with a broom. Shoveling may damage product.
- ◆ For additional traction, lightly broadcast sand over the snow or ice. The sand must be removed once snow and ice is melted.

Recommended Maintenance Products

For a list of recommended maintenance products, please refer to [CBC Flooring Maintenance Products Guide](#)

Contact Information

For additional information, please call 919-230-8700

Email: technical@cbcflooring.com

www.cbcflooring.com