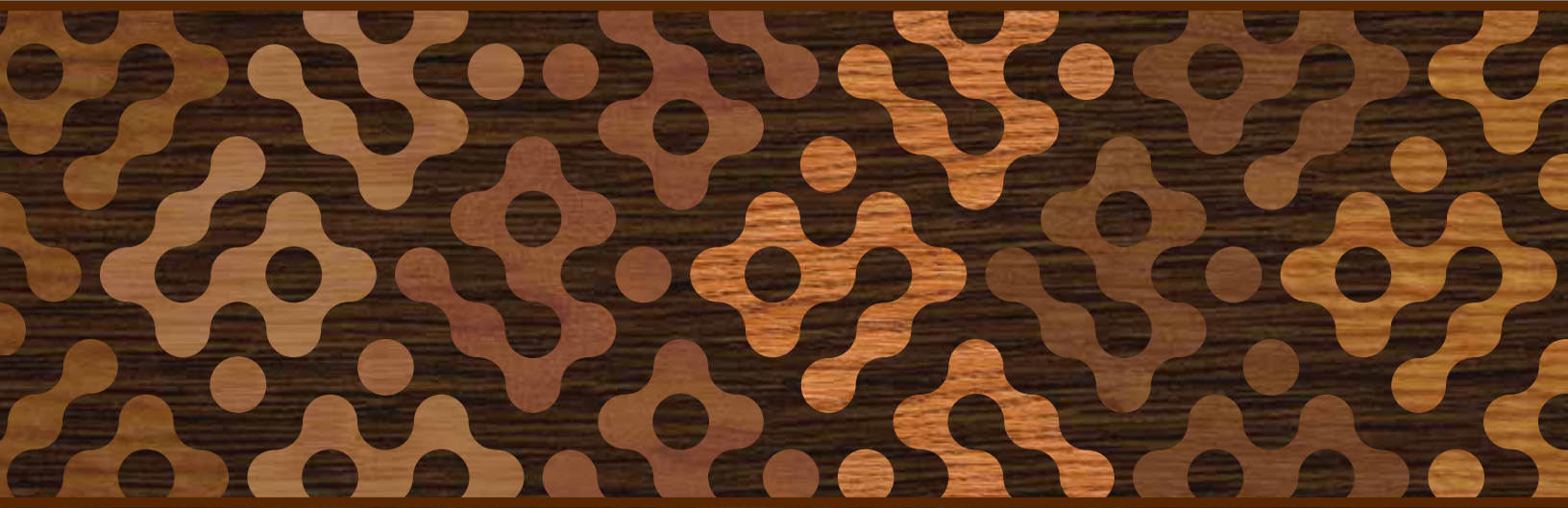




Lightwood

COMMERCIAL PLANK FLOORING



Lightwood

COMMERCIAL PLANK FLOORING



7262E Natural Maple



1022 Golden Oak

Go with the grain.

What you need is quality flooring that stands up to high volume traffic. What you want is the rich beauty of natural wood without the warping, scratching and staining that can compromise real wood flooring. The solution? Go with Lightwood from TOLI® International. Specially engineered for schools, hospitals, restaurants, retail environments and other demanding commercial areas, surface embossed Lightwood is hands down the most realistic, yet most practical resilient plank flooring around.

It's everything real wood wishes it were.

The highest quality films are used to give Lightwood the finely detailed wood grain appearance of natural oak, maple, cherry, cedar and other attractive wood species. It's available in 26 rich shades, in 4" and 6" planks. But that's where the similarity to real wood ends and the advantages of Lightwood begin. An extended construction process ensures Lightwood is dimensionally stable, which allows for a safe and secure installation. It also provides a higher PSI and greater resistance to indentations for long life. Lightwood has outstanding acoustical properties, too. And, while it can be waxed where a high gloss is preferred, Lightwood's low luster wear surface stands up to heat, cold, spills and heavy foot traffic with or without wax.

It comes by its good looks naturally.

Replicating nature while also respecting it, Lightwood brings beauty, durability and low-maintenance flooring to high traffic commercial environments with eco-friendly alternative.

4" Planks



7261E

Bleached Maple



7262E

Natural Maple



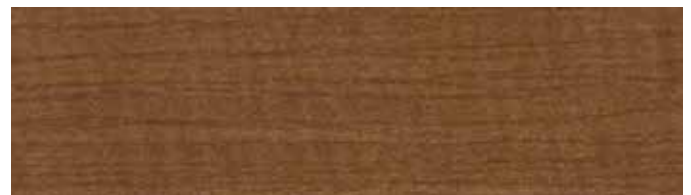
3206E

Natural Bamboo



3207E

Carbonized Bamboo



7613E

matches 7813E Medium Chestnut



7850E Classic Maple

4" Planks



1021

Honey Oak



7671E

matches 7871E

Cedar Plank



1022

Golden Oak



3212E

Brazilian Cherrywood



7043

Red Oak



7281E

Light Cherrywood



7023

Medium Oak



7282E

Classic Cherrywood



7850E Classic Maple



7681E

matches 7881

Rustic Cherrywood



7283E

Dark Cherrywood

Indulge your creative side.

Lightwood is available in a large selection of patterns and combines easily with other TOLI tile products for a limitless range of design possibilities.



7871E Cedar Plank



7871E

matches 7671E

Cedar Plank

6" Planks



1911E

White Sycamore



7850E

Classic Maple



1916E

American Cherry



7813E

matches 7613E

Medium Chestnut



7881

matches 7681E

Rustic Cherrywood



7865

Stained Spruce



3516

Antique Plank



7866

Blackened Spruce

Recommended Product Applications

The following TOLI application chart is provided to aid in understanding where Lightwood Flooring products are recommended for use. This application chart is a subjective recommendation and is predicated upon the adherence to proper installation techniques; specific location of installation; level of foot traffic; and the type and professional level of maintenance practiced on-site.

	Lightwood	Linotesta / FasolPlus / Viale	Mature	Piستا	Stair Treads/Risers
Healthcare					
Cafeterias	★	★	★	★	
Corridors	★	★	★	★	
Dialysis	●	●	★	●	
Elevators	●	★		★	
Emergency Department	●	●	★	●	
Exam/Prep Room	●	●	★	●	
Hydrotherapy Room	●	●	●	●	★
Intensive Care	●	●	★	●	
Laboratories	●	●	●	●	
Lobbies	★	★	●	★	
Neonatal Intensive Care	●	●	★	●	
Nurses Station	★	★	★	★	
Offices	★	★	●	★	
Operating Room					
Patient Room	★	★	★	★	
Pharmacy	★	★	★	★	
Physical Therapy Room	●	●	●	●	●
Ramps (indoor/outdoor)					★
Stairways/Landings (indoor/outdoor)					★
Staff Lounge	★	★	★	★	
Storage/Utility Room	●	★	●	★	
Waiting Room	★	★	★	★	
Retail					
Drug Store	★	★	●	★	
Indoor Mall Common Areas	●	★		★	
Sales Floor – Dept Store	★	★	●	★	
Sales Floor – Mass Merchandiser	●	●		●	
Specialty Shops	★	★		★	
Education					
Auditorium	●	★		★	
Cafeterias	★	★	★	★	
Classrooms	★	★	●	★	
Computer Rooms	●	●		●	
Corridors	★	★	●	★	
Dormitories	★	★	●	★	
Entryways	★	★		★	
Food Service Area	●	●		●	
Gymnasium					
Laboratories	●	●	●	●	
Lavatories			●	●	
Libraries	★	★	●	★	●
Locker Rooms					★
Multipurpose	●	●		●	
Offices	★	★	●	★	
Ramps (indoor)					★
Ramps (outdoor)					★
Showers					
Stairways/Landings					★
Teachers Lounge	★	★	●	★	
Utility/Storage Area	●	★	●	★	
Institutional					
Churches	★	★	●	★	●
Courthouses	★	★	●	★	●
Funeral Houses	★	●	●	●	●
Libraries	★	★	●	★	●
Museums	★	★	●	★	●
Prisons	●	●	●	●	●
Hospitality					
Conference Rooms	★	●	●	●	
Corridors	★	★	★	★	
Dance Floor	●				
Dining Areas	★	★	★	★	
Elevators	●	●		●	
Exercise Rooms					
Guest Bathrooms	●	●	●	●	
Guest Rooms	★	●	●	●	
Lobbies	★	★	●	★	
Lounges	★	★	●	★	
Stairways/Landings					★
Vending Areas	●	●		●	
Office					
Computer Rooms			●	●	
Conference Rooms	★	★	●	★	
Corridors	★	★	●	★	
Dining Areas	★	★	●	★	
Elevators	●	●	●	●	
Lavatories	●	●	●	●	
Lobbies	★	★	●	★	
Offices	★	★	●	★	
Stairways/Landings					★
Storage Rooms	●	★	●	★	

★ Highly Recommended
● Recommended

USGBC-LEED® Credits

(✓) Based on the 2009 LEED rating system and the overall scope of your project Lightwood may contribute to your LEED scorecard.

Product	Materials & Resources					Indoor Environmental Quality			
	MR Credit 1.2: Building Reuse	MR Credit 2: Construction Waste Management	MR Credit 3.1: Materials Reuse	Recycled Content Pre-Consumer	Recycled Content Post-Consumer	MR Credit 4: Recycled Content Contribution (Sum of post-consumer + 1/2 pre-consumer)	IEQ Credit 4.1: Low Emitting Materials - Adhesives	IEQ Credit 4.3: Low Emitting Materials - Flooring Systems	*California Section 01350 Compliant
Lightwood	✓	✓	✓	35%	2%	20%	✓	✓	✓

*Lightwood is FloorScore Certified SCS-FS-03027

Resistance to Staining & Chemicals per ASTM F-925

Chemicals	1 Hour	24 Hours
Acetic Acid – 28%	0	0
Hydrochloric Acid – 38%	0	0
Ammonium Hydroxide – 10%	0	0
Ammonium Hydroxide – 30%	0	0
Potassium Hydroxide – 15%	0	0
Sodium Hydroxide – 15%	0	0
Sodium Hydroxide – 50%	0	0
Sulfuric Acid – 40%	0	0
Sulfuric Acid – 10%	0	0

Hospital Stains & Chemicals	1 Hour	24 Hours
Aniline Blue – 2.5	0	0
Basic Fuchsin	1	3
Carbol Fuchsin	3	3
Dialysis Solution	0	0
Eosin – 1%	0	0
Giesma Blood Stain	0	2
Hema 3 Solution	0	0
Hematoxylin – 5%	0	0
Hydrogen Peroxide – 30%	0	0
Iodine Tincture	2	2
Methylene Blue	1	1
Potassium Permanganate – .5%	1	1
Provine-Iodine	0	0
Rhondamine B. Base	2	3
Urea Solution	0	0
Wright's Blood Stain	3	3

Solvents	1 Hour	24 Hours
Ethyl (Denatured) Alcohol	0	0
Formaldehyde – 37%	0	0
Isopropyl Alcohol	0	0
Mineral Spirits	0	0
Turpentine	0	0

Miscellaneous Stains & Chemicals	1 Hour	24 Hours
Betadine Skin Cleanser	0	0
Hand Sanitizer (Alcohol Based)	0	0
Phenolic Disinfectant Cleaner	0	0
Quaternary Disinfectant Cleaner	0	0
Bleach	0	0

Changes 0: None 1: Slight 2: Moderate 3: Severe

Lightwood passes ASTM Test Method F-925, Resistance to Chemicals. F-925 calls for exposure to chemicals for one hour. Lightwood is tested without any applied sealers or floor finishes and is cleaned with a cotton cloth after exposure. For the most accurate results, CBC Flooring recommends using the customer's chemicals on actual product samples that have been treated with the maintenance products to be used on the finished floor. Lightwood material for testing is readily available from CBC Flooring.

Go with the green.

Ecology minded professionals can get the look of wood while actually saving trees. Lightwood has 35% pre-consumer recycled content and contributes to both Materials and Resources and Indoor Environmental Quality LEED® credits established by the U.S. Green Building Council. Lightwood planks and their adhesive both achieve low VOCs.

Product Characteristics

Standard Spec	ASTM 1700
Classification	Class III Type A & B
Nominal Dimensions	4" x 35.4" (100 mm x 900 mm) 6" x 35.4" (150 mm x 900 mm)
Overall Thickness	3.0 mm (0.120")
Wear Layer Thickness	0.5 mm (0.020")

Fire

ASTM E 648 Critical Radiant Flux	Class 1 Passes
ASTM E 662 Smoke Generation	<450 Passes

Test Performance

ASTM F 1700 Standard Spec for Solid Vinyl Floor	Exceeds Requirements
ASTM F 925 Chemical Resistance	Passes
ASTM F 970 (Modified) Static Load Limit	1,000 PSI
ASTM C 1028 Static Coefficient of Friction	≥ 0.6 ADA Compliant
ASTM F 137 Flexibility	Passes
ASTM F 1514 Resistance to Heat	Passes
ASTM F 1515 Resistance to Light	Passes
CA 01350 VOC Emissions	Passes FloorScore Certified SCS-FS-03027

Warranty

TOLI products are covered by a limited 10-year warranty. Visit our web site, www.cbcflooring.com for complete details.





Lightwood

COMMERCIAL PLANK FLOORING

TOLI International, Division of CBC AMERICA LLC
919-230-8700 • www.cbcflooring.com



CBC Flooring

Recycled paper, contains post-consumer fiber.
Acid-free recycled material. Printed with organic-based inks.